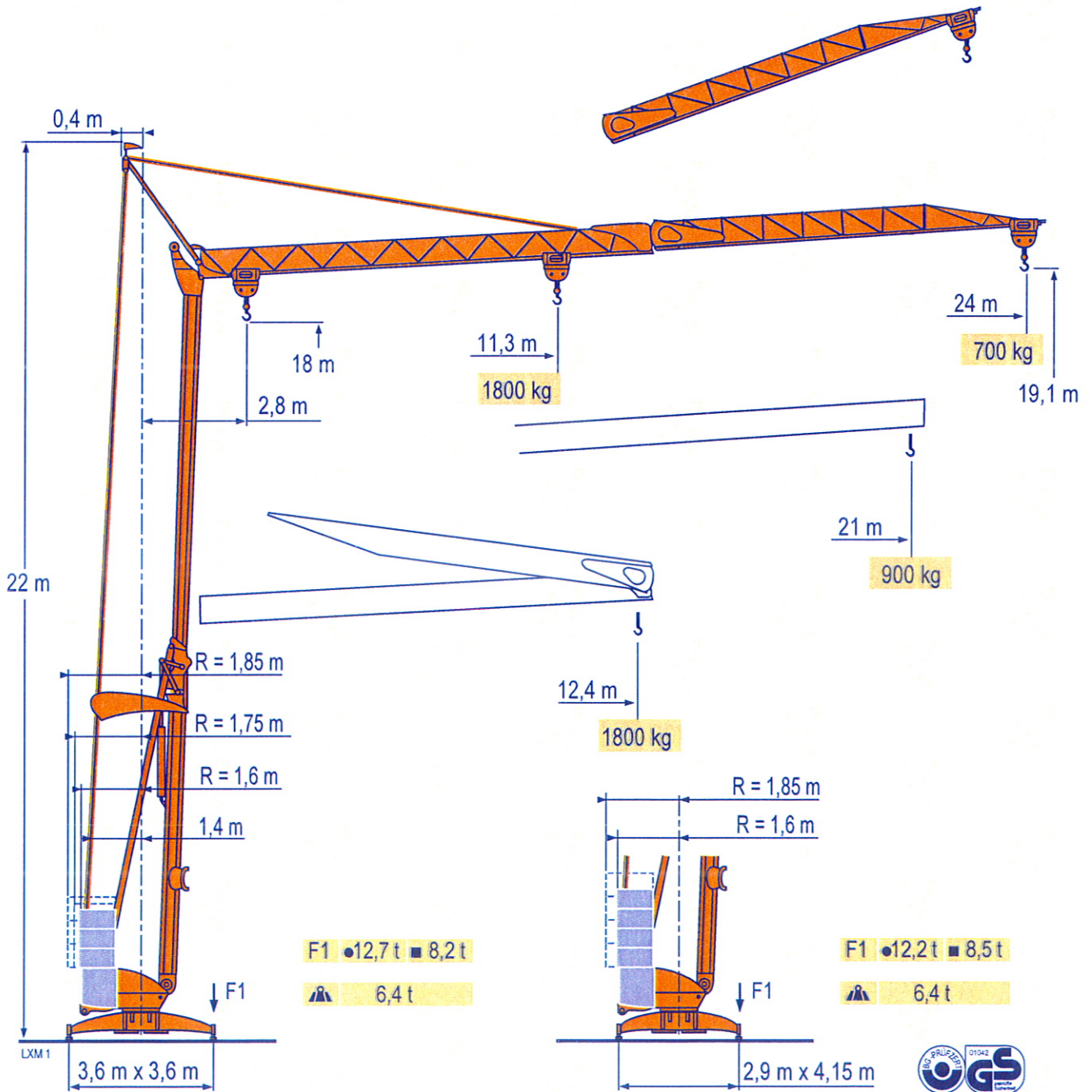


# POTAIN

## Igo 18



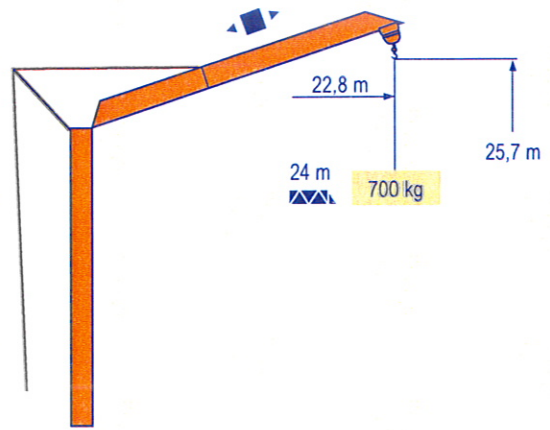
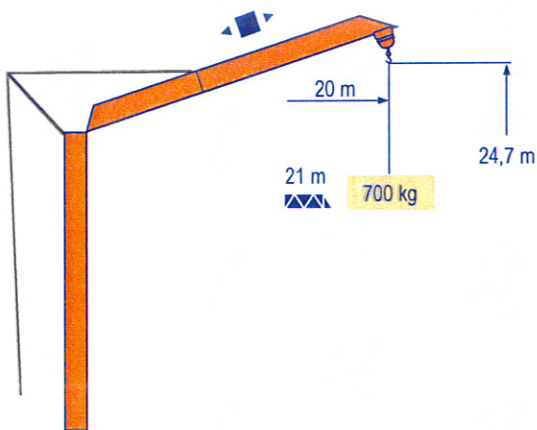
Courbes de charges  
Lastkurven  
Load diagrams  
Curvas de cargas  
Curve di carico  
Curva de cargas



LXM 1

24 m	2,8	▶	12,4 m	11,3	12	13	14	15	16	17	18	19	20	21	22	23	24	m
▲▲▲			1800 kg	1800	1660	1505	1375	1260	1165	1080	1005	940	880	830	780	740	700	kg
21 m	2,8	▶	12,4 m	12	13	14	15	16	17	18	19	20	21	m				
▲▲▲			1800 kg	1800	1630	1485	1365	1260	1170	1090	1020	960	900	kg				

Flèche relevée  
Ausleger in Steilstellung  
Luffing jib  
Flecha izada  
Braccio impennato  
Lança inclinada



Igo 18

POTAIN



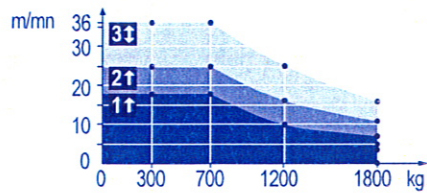
<b>F</b>	<b>D</b>	<b>GB</b>	<b>E</b>	<b>I</b>	<b>P</b>
Chariot distributeur	Verfahrbare Laufkatze	Traversing trolley	Carro distribuidor	Carrellino distributore	Carro distribuidor
Réactions en service	Reaktionskräfte in Betrieb	Reactions in service	Reacciones en servicio	Reazioni in servizio	Reacções em serviço
Réactions hors service	Reaktionskräfte außer Betrieb	Reactions out of service	Reacciones fuera de servicio	Reazioni fuori servizio	Reacções fora de serviço
A vide sans lest (ni train de transport) avec flèche et hauteur maximum.	Ohne Last, Ballast (und Transportachse), mit Maximalausleger und Maximalhöhe.	Without load, ballast (or transport axles), with maximum jib and maximum height.	Sin carga, sin lastre, (ni tren de transporte), flecha y altura máxima.	A vuoto, senza zavorra (ne assali di trasporto) con braccio massimo e altezza massima.	Sem carga (nem trem de transporte)- sem lastro com lança e altura máximas.

Mécanismes  
Antriebe  
Mechanisms  
Mecanismos  
Meccanismi  
Mecanismos

L3M 2

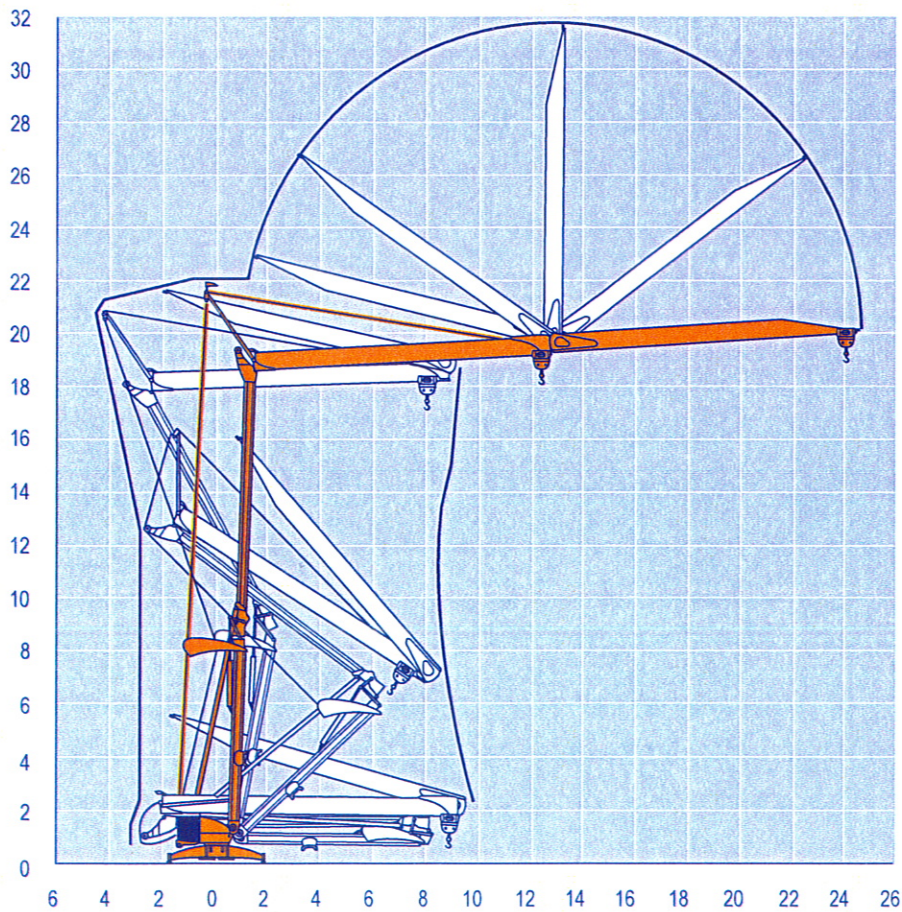
							ch - PS hp	kW		
	8 LVF 9 Optima	230 V	m/min	↑ 3,5 ↓ 3,5	↑ 7 ↓ 16	↑ 18 ↓ 36	3,3	2,4		
		20 A <b>1</b>	kg	1800	1800	700				
		230 V	m/min	↑ 3,5 ↓ 3,5	↑ 11 ↓ 16	↑ 25 ↓ 36			5,2	3,8
		32 A <b>2</b>	kg	1800	1800	700				
		400 V <b>3</b>	m/min	↑ 3,5	↑ 16	↑ 36	7,5	5,5		
			kg	1800	1800	700				
	1 DVF 4	-	m/min	14 - 28			1,5	1,1		
	RVF 20	-	tr/min U/min rpm	0 → 1			1,5	1,1		
CEI 38  IEC 38				kVA						
230 V (+6% -10%) 50 Hz 400 V (+6% -10%) 50 Hz				230 V 20 A : 4,6 kVA 230 V 32 A : 7,4 kVA 400 V : 11 kVA						

8 LVF 9  
Optima



Montage  
Montage  
Erection  
Montaje  
Montaggio  
Montagem

L3M 1



Igo 18

POTAIN

**F**

Levage  
 Distribution  
 Orientation  
 50 Hz Monophasé

**D**

Heben  
 Katzfahren  
 Schwenken  
50 Hz Einphasige

**GB**

Hoisting  
 Trolleying  
 Slewing  
50 Hz Single phase

**E**

Elevación  
 Distribución  
 Orientación  
50 Hz Monofásica

**I**

Sollevamento  
 Distribuzione  
 Rotazione  
50 Hz Monofase

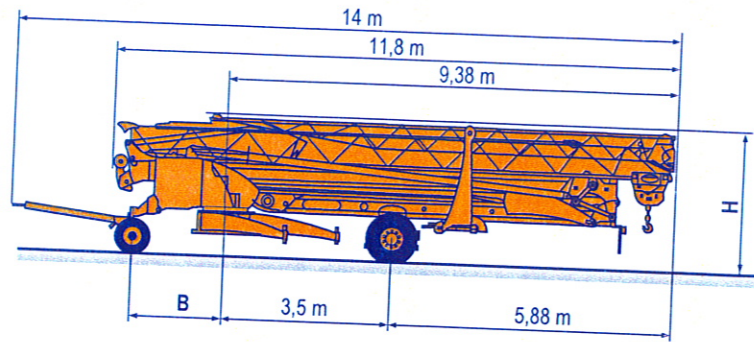
**P**

Elevação  
 Distribuição  
 Rotação  
50 Hz monofásica

Transport  
 Transport  
 Transport  
 Transporte  
 Trasporto  
 Transporte

LXM 2

- DS51/S70 ○
- DS61/S80 ○
- DS61/S120 ○
- DS61/S125
- DS65/S65
- DJ80/S120 ○
- DJ80/S125
- DJ100/S120
- DJ105/S125
- DJ126M/S125



	B (m)	H (m)
DS51/S70	1,93	2,78/2,93
DS61/S80	2,03	2,78/2,93
DS61/S120	2,03	2,78/2,93
DS61/S125	2,03	2,78/2,93
DS65/S65	1,93	2,78/2,93
DJ80/S120	2,03	2,82/2,97
DJ80/S125	2,03	2,82/2,97
DJ100/S120	2,03	2,82/2,97
DJ105/S125	2,03	2,82/2,97
DJ126M/S125	2,03	3,5/3,65

- **F**  
Chantier
- D**  
Baustelle
- GB**  
Site
- E**  
Obra
- I**  
Cantiere
- P**  
Estaleiro

## 2. INTERASSE CARRO 2,90 m x 4,15 m ( zavorra lamiera unicamente )

Questo appoggio è previsto per un terreno a resistenza media (  $R = 3,8 \text{ kg} / \text{cm}^2$  ). Se la resistenza è diversa, far variare in conseguenza la superficie d'appoggio.

